



**STEELHAUS**

Creative | Strong | Cost Effective

# 40mm ROOF PURLIN

40mm Roof Purlins by Steelhaus are the perfect replacement for timber roof purlins on both steel and timber roof trusses and rafters.

## Product Features

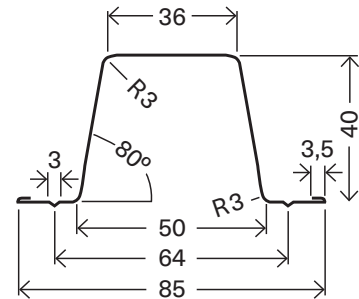
- 900mm – 1200mm spans
- Tables for up to Extra High Wind and Snow up to 200m
- Lightweight at 0.728kg/m
- Lapped joints reducing cutting on site
- Dimensionally stable, straight and consistently gauged giving a better finish to your roof
- Eliminates buckling ridge lines in extreme environments
- They do not absorb moisture or promote the growth of mould
- Available nationwide through The Roofing Store
- 100% Recyclable
- Available in 0.75mm G550 upon request

## Durability

40mm Roof Purlins are made from 0.55mm G550 grade steel in either Z275 Galv or AZ150 Alu Zinc coating as per the NASH Standard Part 2 for Steel Framing.

They can be easily cut with tin snips which ensures the protective coating remains on cut ends.

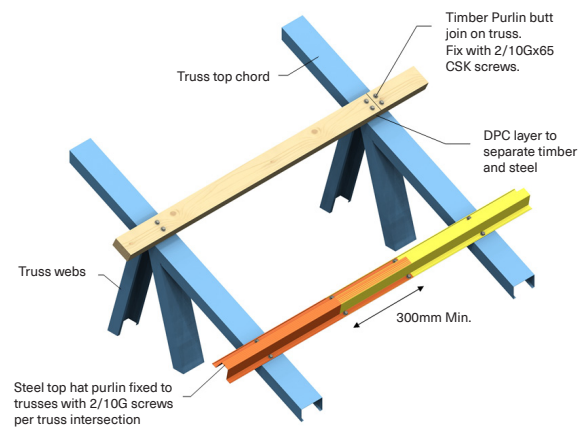
Purlins can remain exposed for up to 12 weeks on site without compromising the durability statement for the coating and without any worries that they will warp or twist.



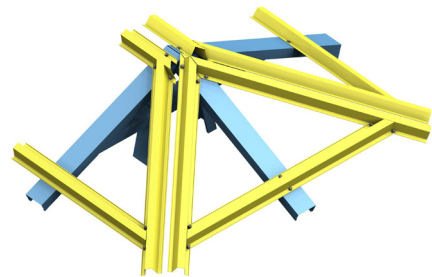
RP40 x 0.55mm Roof Purlin

Available ex stock in 4.800m lengths or run to order

## Steel/timber Purlins to truss connections



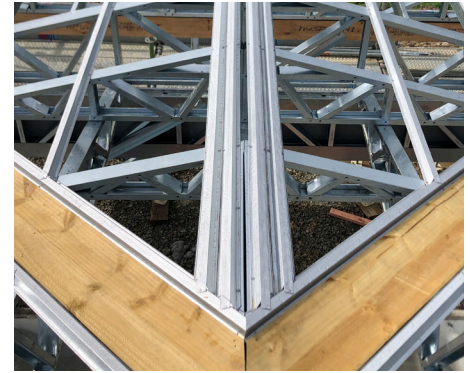
## Roof Purlin connection details at hip end.







### Roof Batten Span, Spacing and Connection to Truss Chord or Rafter

Batten Type	Roof Area	Span	Maximum Spacing	Number of fixings per roof battens				
				Wind Score				
				L	M	H	VH	EH
40RB55	X	900	900	2x10g	2x10g	2x10g	2x10g	2x10g
	Y	900	900	2x10g	2x10g	2x10g	2x10g	4x10g
40RB55	X	1200	900	2x10g	2x10g	2x10g	2x10g	4x10g
	Y	1200	900	2x10g	2x10g	4x10g	4x10g	SED
Roof area	X	General roof area						
	Y	Roof area within 0.2 x building width at edges						



### Purlin Accessory List

Description	Image	Features/Use
10-16x16mm Hex Head Tek Screw		Metal Drill Point 5/16 Hex Head. Steel roof purlin to steel truss connection. Class 4 finish.
Unite 6-14x35mm Hex Head Tek Screw		Steel and timber drill point 5/16 Hex Head. Steel roof purlin to timber truss connection. Class 5 finish.



ENVIRONMENTAL

Steelhaus is proud to be associated with and stand alongside these trusted industry names. As chartered members of the **Sustainable Steel Council** we are fully committed to a cleaner, more efficient industry and support New Zealand's low emissions future.



STEELHAUS

Creative | Strong | Cost Effective

FACEBOOK: [www.facebook.co.nz/steelhausnz](http://www.facebook.co.nz/steelhausnz)

Free Call **0508 826 766**

E: [sales@steelhaus.co.nz](mailto:sales@steelhaus.co.nz) [www.steelhaus.co.nz](http://www.steelhaus.co.nz)